

Unit Coolers

MR MINI-FREEZE

420 W 2650 W

ABS



EUROVENT
CERTIFIED PERFORMANCE



CERTIFY ALL
DX AIR COOLERS

WTG Quantor GmbH
Europa Allee 53
54343 Föhren - Germany
info@quantor.technology
www.quantor.technology

MR MINI-FREEZE

MR units coolers are suitable for small refrigerated rooms for chilling or low temperature storage applications.

10 basic models with capacity ranging from 420 to 2 650 W.

NOMENCLATURE

MR 210 Th

MR positive temperature application without defrost system
MRE negative temperature application with defrost system

Model

5709L kit thermostat

PRESELECTION

Fin spacing	Air inlet temperature			
	+10°C	+2°C	-10°C	-25°C
4,23 mm	MR ...			MRE ...
	Without defrost			With defrost

DESCRIPTION

• APPROVAL

The MR unit cooler line is EUROVENT approved. The ratings indicated are certified compliant to European standard EN328.

• CASING

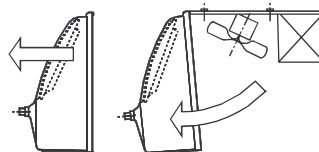
ABS recyclable casing guarantees a high quality level with regard to:

- **robustness:** high thermal (at low and high temperatures) and mechanical shock-proof characteristics,
- **aesthetics:** its look, its finish and granulated white casing make the MR integrate completely with its installed environment, MR fins with polyester finish,
- **hygiene:** no water retaining areas favourable to germ development due to its round cornered casing and no corrosive elements (for example: stainless steel screws),
- **safety:** no sharp or cutting edges.

• DEFROST

230 V /1 tubular electric heater connected to a junction box (MRE only) is inserted in slots, under the coil which facilitates easy maintenance and ensures equal heat distribution through the coil. So, defrost is perfect. Defrost water is collected in an intermediate drain pan then drained through a Ø 1" G threaded polyamid drain fitting.

• ACCESSIBILITY



motorfan, defrost heater, connections,...). These hinges allow the casing removal, too.

The MR line has been designed to facilitate easy installation, maintenance and cleaning. Casing fitted with polyamid hinges, enables full access to all unit components (coil,

• HIGH PERFORMANCE HEAT EXCHANGER

MR range finned coils, are designed with corrugated aluminium fins (fin spacing: 4.23 mm) and grooved internal structure copper tubes.

The refrigerant distributors are Venturi type for models MR 210 - MR 270 and MRE 135 - MRE 210 - MRE 270.

• VENTILATION

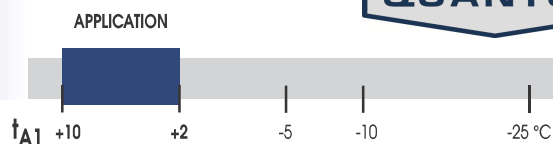
50-60 Hz fan assembly (Ø 200 mm) used for MR and MRE models, is designed with an enclosed frame, class B, impedance protected, life lubricated motor, connected to the junction box (except for MR 75).

Fan guards conform to safety regulations.

OPTIONAL FEATURES

MRE range:

For low temperature refrigerated rooms, defrost termination and fan delay thermostat with single-pole, double throw switch at +12 °C (±3 K) and +2 °C (±3 K). Supplied with a sensor and a fitting clamp.



MR... 4,23 mm

Models	MR		75	135	210	270
R404A SC 2 (1) DT1 = 8 K	Capacity	Q _{0m} W	680	1270	2060	2620
Surface	m ²		3,35	6,10	10,05	13,40
Circuit vol.	dm ³		0,58	1,05	1,73	2,30
Air flow	m ³ /h		290	580	870	1160
Fan 230 V/1/50-60 Hz 1500 r.p.m.	Air throw (2)	m	3	3, 5	4	4,5
	Ø 200 mm	Anz.	1	2	3	4
	W max A max (3)		1 x 38 1 x 0,24	2 x 38 2 x 0,24	3 x 38 3 x 0,24	4 x 38 4 x 0,24
Net weight	kg		3	9, 5	15	20

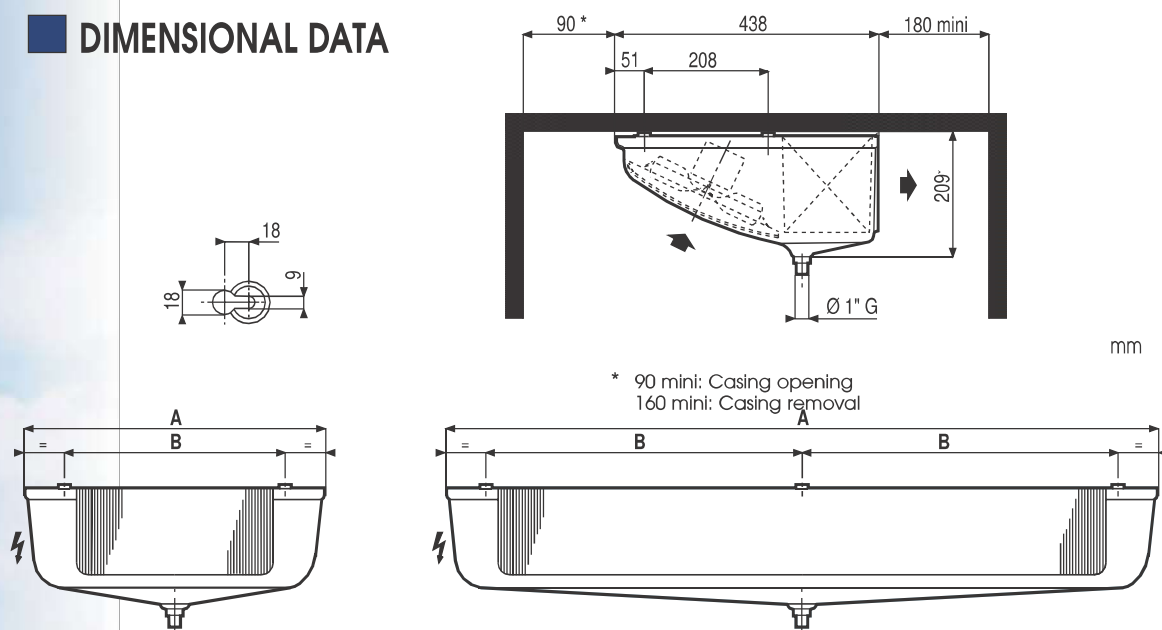
(1) See pages "APPENDICES".

(2) Effective when the room cross section allows air circulation (see CECOMAF GT 6001, DIN8955, ENV328).

(3) Setting of overload protections.

For room temperatures ' t_1 ' other than +20 °C, multiply the given amperage by the ratio $293/(273 + t_1)$ so as to obtain the approximate amperage after the room pull down.

DIMENSIONAL DATA



MR 75 - MR 110 - MR 135

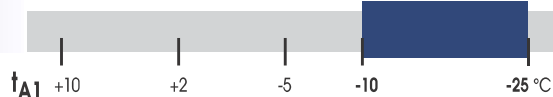
MR 210 - MR 270

Models	MR	75	135	210	270
Dimensional data	A mm	514	784	1174	1504
	B mm	326	596	493	658
Inlet	Ø ODF *	3/8" 10 mm	3/4"	3/4"	3/4"
Outlet	Ø ODF *	3/8" 10 mm	3/4"	3/4"	3/4"

* ODF: Female sweat type connection.

** Adapter parts supplied for either Ø 1/2" or Ø 12 mm expansion valve to be brazed, or capillary pipe.

*** Liquid distributor: Ø 1/2" male to be brazed. Adapter part supplied for either Ø 12 mm expansion valve to be brazed.



MRE... 4,23 mm

Models		MRE		75	135	210	270
R404A SC 3 (1) DT1 = 7 K	Capacity	Q _{0m}	W	530	1070	1660	2230
R404A SC 4 (1) DT1 = 6 K	Capacity	Q _{0m}	W	420	840	1320	1780
Surface			m ²	3,35	6,10	10,05	13,40
Circuit vol.			dm ³	0,58	1,05	1,73	2,30
Air flow			m ³ /h	290	580	870	1160
Fan 230 V/1/50-60 Hz 1500 r.p.m.	Air throw (2)	m	3	3 ,5	4	4 ,5	
	Ø 200 mm	Anz.	1	2	3	4	
		W max	1 x 38	2 x 38	3 x 38	4 x 38	
		A max (3)	1 x 0,24	2 x 0,24	3 x 0,24	4 x 0,24	
Electric defrost	230 V/1	W A	400 1,8	730 3,3	1200 5,5	1600 7,3	
Net weight			kg	3	9,5	15	20

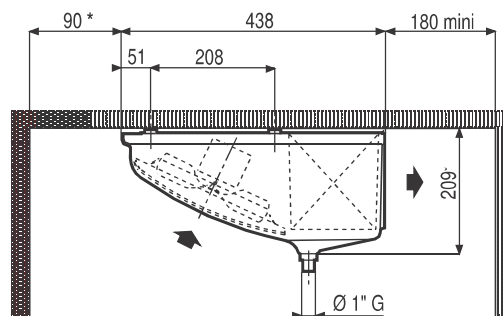
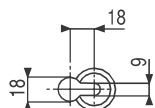
(1) See pages "APPENDICES".

(2) Effective when the room cross section allows air circulation (see CECOMAF GT 6001, DIN8955, ENV328).

(3) Setting of overload protections.

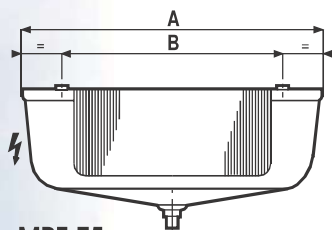
For room temperatures 't_l' other than +20 °C, multiply the given amperage by the ratio 293/(273 + 't_l') so as to obtain the approximate amperage after the room pull down.

DIMENSIONAL DATA

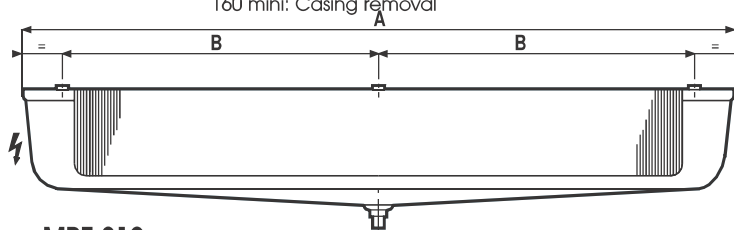


mm

* 90 mini: Casing opening
160 mini: Casing removal



MRE 75
MRE 135



MRE 210
MRE 270

Models	MRE	75	135	210	270
Dimensional data	A mm	514	784	1174	1504
	B mm	326	596	493	658
Inlet	Ø ODF *	3/8" ** 10 mm	D 1/2" ***	D 1/2" ***	D 1/2" ***
Outlet	Ø ODF *	3/8" ** 10 mm	1/2" ** 12 mm	5/8" ** 16 mm	3/4" ** 18 mm

* ODF: Female sweat type connection.

** Adapter parts supplied for either Ø 1/2" or Ø 12 mm expansion valve to be brazed, or capillary pipe.

*** Liquid distributor: Ø 1/2" male to be brazed. Adapter part supplied for either Ø 12 mm expansion valve to be brazed.